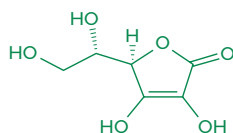


ARS-IMAGO FE

ECO FILM DEVELOPER



ECO
Line

The ars-imago FE is an ecological and universal black and white film developer. It is an ascorbic acid based, **hydroquinone free** and easy-mixing solution that combines fine grain and full use of film speed. It produces very sharp negatives enhancing shadow contrast and improving highlights detail.

PREPARATION

ARS-IMAGO FE ECO FILM DEVELOPER is a concentrated liquid that can be diluted 1+1 or 1+3. Prepare the working solution with running water. The volume of required working solution depends on the size and kind of tank and the number of films/spirals in the tank.

DILUTION 1+1 - Reusable solution



**500ml WATER + 500 ml CHEMICAL
= 1L WORKING SOLUTION**

To develop up to 15 films increasing development time by 15% every 3 films.

DILUTION 1+3 - One shot solution



**750ml WATER + 250 ml CHEMICAL
= 1L ONE SHOT SOLUTION**

Dilute just before use and discard afterwards

FEATURES

- Eco developer - hydroquinone free
- Universal developer for any kind of b&w films
- Good use of film speed
- Fine grain and high sharpness
- Mildly compensating and good results on highlights

TEMPERATURE

The working solution must be used at 20°C. During the entire development process, including stop bath, fixing bath and final rinse, the temperature must be kept as constant as possible.

AGITATION

Recommended agitation for tank development: continue for the first 30 seconds, two inversions every 30 seconds for the remaining development time.

The development time starts from the moment the solution is introduced into the tank and ends when the stop bath is introduced.

At the end of each agitation sequence, rap the tank on the working desk to avoid the formation of air bubbles on the surface of the film.

CAPACITY AND STORAGE LIFE

The diluted 1+1 solution can develop up to 15 films. The development time has to be increased by 15% every 3 films. The working solution can be stored for 4 months (fully filled container) or 2 months (partially filled container). The one shot solution has to be discarded after use.

KEEP OUT OF REACH OF CHILDREN



DEVELOPMENT TIME

The following development times are suggested in order to obtain negatives with an optimum tonal extension in regard to the provided I.E. and that are suitable for analog printing and digital scanning.

Dilution: 1+39 (1+19 or 1+59 where indicated)

Temperature: 20°C

PELLICOLE	ISO	TEMPO dil. 1+1
IMAGO 320	320	7'30"
	620	9'00"
ILFORD HP5	200	6'30"
	400	8'00"
	800	10'00"
	1600	12'30"
ILFORD FP4 PLUS	50	6'00"
	125	7'00"
ILFORD PAN F PLUS	50	6'30"
ILFORD DELTA 100	50	6'30"
	100	8'00"
	200	9'30"
ILFORD DELTA 400	200	6'00"
	400	7'00"
	800	8'00"
ILFORD DELTA 3200	1600	11'00"
	3200	13'00"
KODAK T-MAX 400	200	5'00"
	400	6'30"
	800	7'30"
	1600	8'30"
KODAK T-MAX 100	50	6'30"
	100	7'30"
	200	8'30"
KODAK TRI-X 400	200	6'00"
	400	7'00"
	800	8'30"
	1600	9'30"
KODAK P3200	3200	11'00"
	1600	13'00"
ROLLEI RPX 100	50	6'30"
	100	8'00"
	200	9'30"
ROLLEI RPX 400	200	7'00"
	400	8'30"
	800	10'00"
KENTMERE 100	50	6'30"
	100	8'00"
KENTMERE 400	200	7'00"
	400	8'30"
	800	10'00"

PELLICOLE	ISO	TEMPO dil. 1+1
FOMAPAN 100	100	6'00"
FOMAPAN 400	400	7'00"
AGFAPHOTO APX 100	50	6'30"
	100	8'00"
	400	8'30"
AGFAPHOTO APX 400	800	10'00"
	400	10'00"
JCH Street Pan	400	10'00"
BERGGER PANCRO	200	8'00"
	400	9'30"
FUJI ACROS 100	50	6'30"
	100	8'00"
	200	10'00"

STOP BATH

It is recommended to use a stop bath between the development and fixing baths, unless otherwise specified by the film producer. We suggest using ARS-IMAGO ST - STOP BATH.

FIXING BATH

We suggest using ARS-IMAGO FX-FIXER UNIVERSAL as a fixing bath. It is recommended not to fix the films beyond necessity in order to fully appreciate the high resolution which characterises this development bath. To avoid long fixing times, we recommend using a new or regenerated fast-fixing, non-hardening solution, at the highest concentration specified by the producer (typically 1+4).

FINAL RINSE

Wash in running water at 20° C for 10-15 minutes or repeatedly fill and empty the tank while gradually increasing the agitation.

WETTING AGENT

After rinsing, it is recommended to use a wetting agent as a last bath. We suggest using ARS-IMAGO WB - WASHING BATH.

DRYING

Dry the film in a closed area, away from dust and draughts.